

Appendix I

Visual Renderings

Existing Condition Image One



Proposed Solar Development Image One



Proposed Solar Development with Landscaping Image One



Proposed Solar Development with Mature Landscaping Image One



Existing Condition Image Two



Proposed Solar Development Image Two



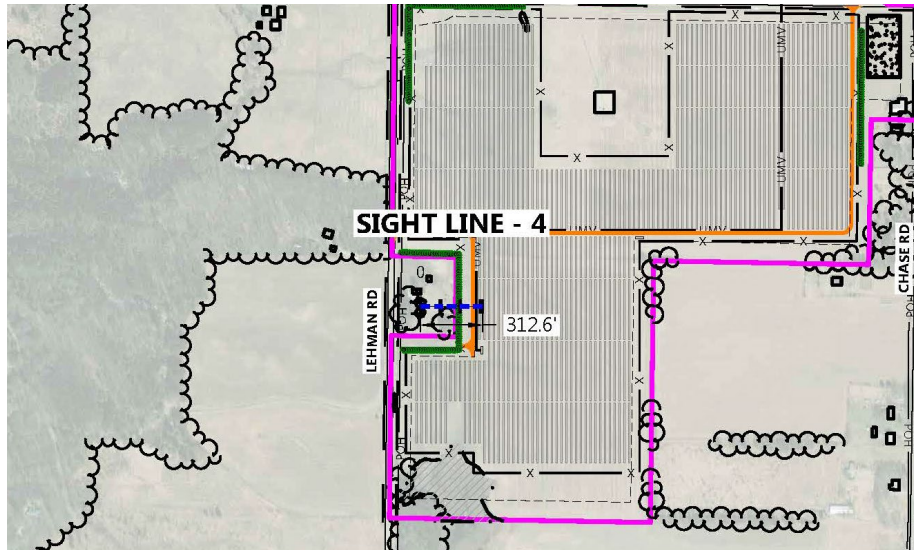
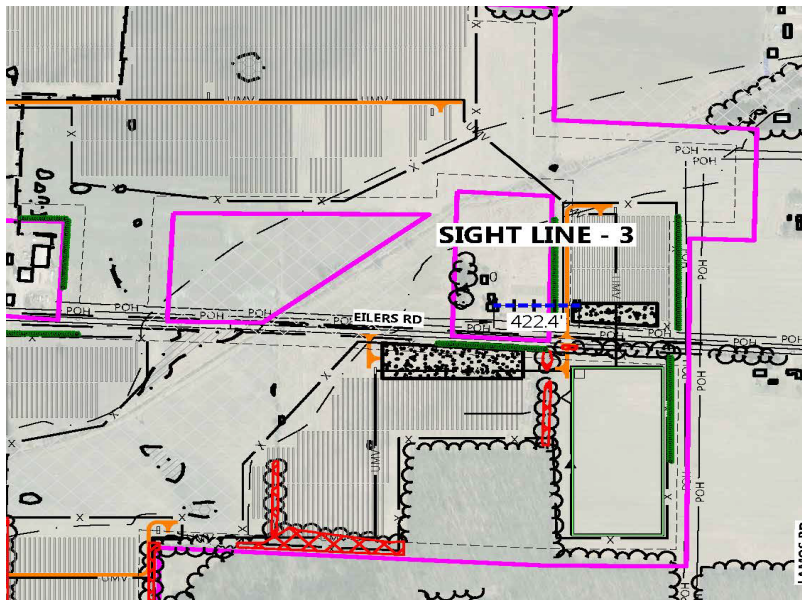
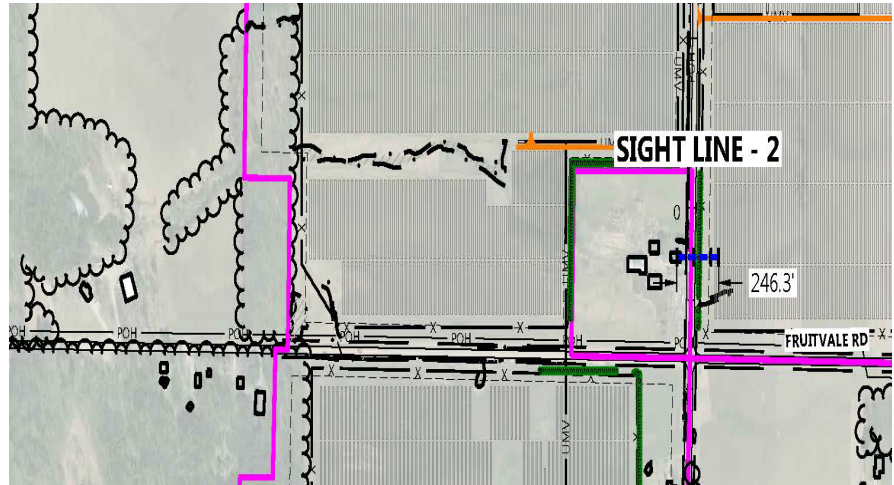
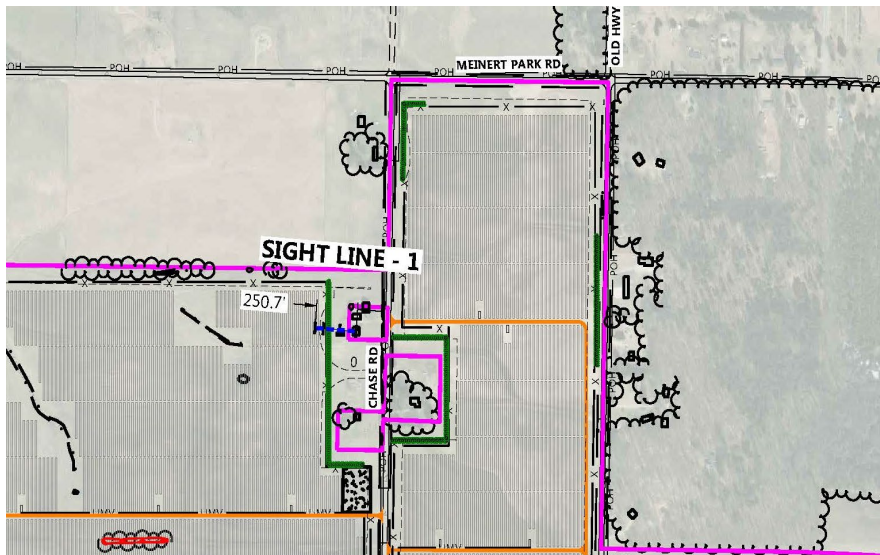
Proposed Solar Development with Landscaping Image Two



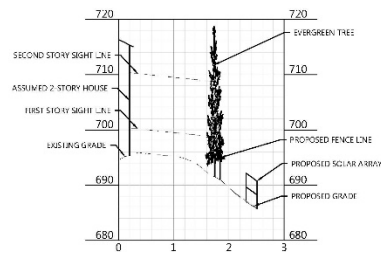
Proposed Solar Development with Mature Landscaping Image Two



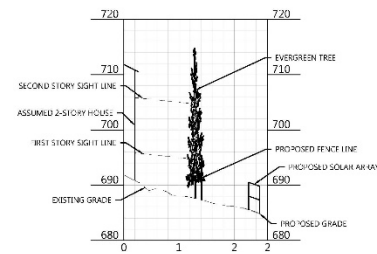




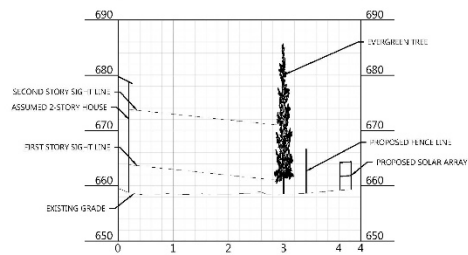
SIGHT LINE #1



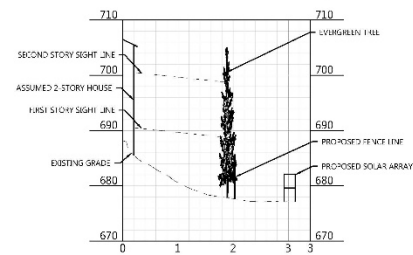
SIGHT LINE #2



SIGHT LINE #3



SIGHT LINE #4



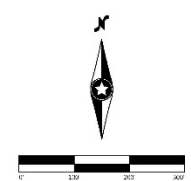
PREPARED BY:



8400 NORMANDALE LAKE BLVD, STE 1200
BLOOMINGTON, MN 55437

REVISIONS:

NO.	DATE	DESCRIPTION



Lakeside Solar, LLC
Muskegon County, MI

Sight Line Analysis

NOT FOR CONSTRUCTION

DATE: 03/12/2021

SHEET: C.501

Lakeside Solar, LLC
White River Township, Muskegon County, Michigan
September 2025 Visual Renderings



Visual Rendering 1: Existing View from Eilers Road, Facing Southeast (43.430451, -86.406795 facing 142°)



Visual Rendering 1: Rendering of Solar Arrays from Eilers Road, Facing Southeast (43.430451, -86.406795 facing 142°)



Visual Rendering 2: Existing View from Eilers Road, Facing South (43.430384, -86.403491 facing 176°)



Visual Rendering 2: Rendering of ITC Substation and BESS from Eilers Road, Facing South (43.430384, -86.403491 facing 176°)

