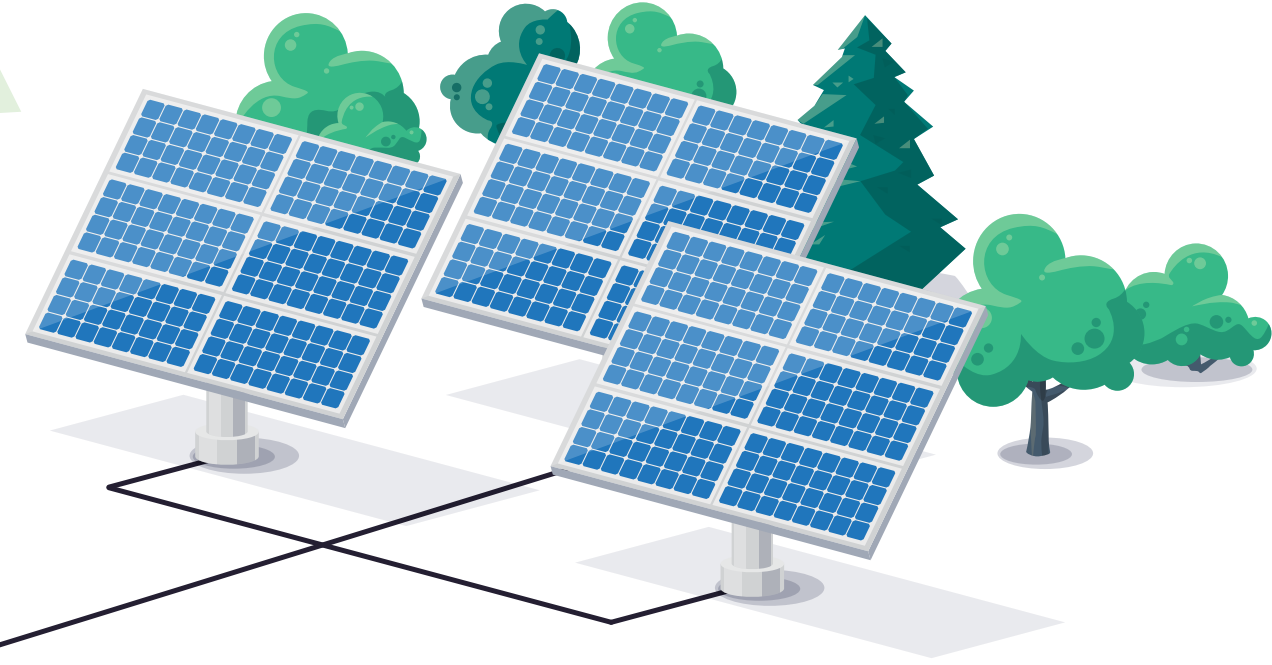


How Electricity Reaches You

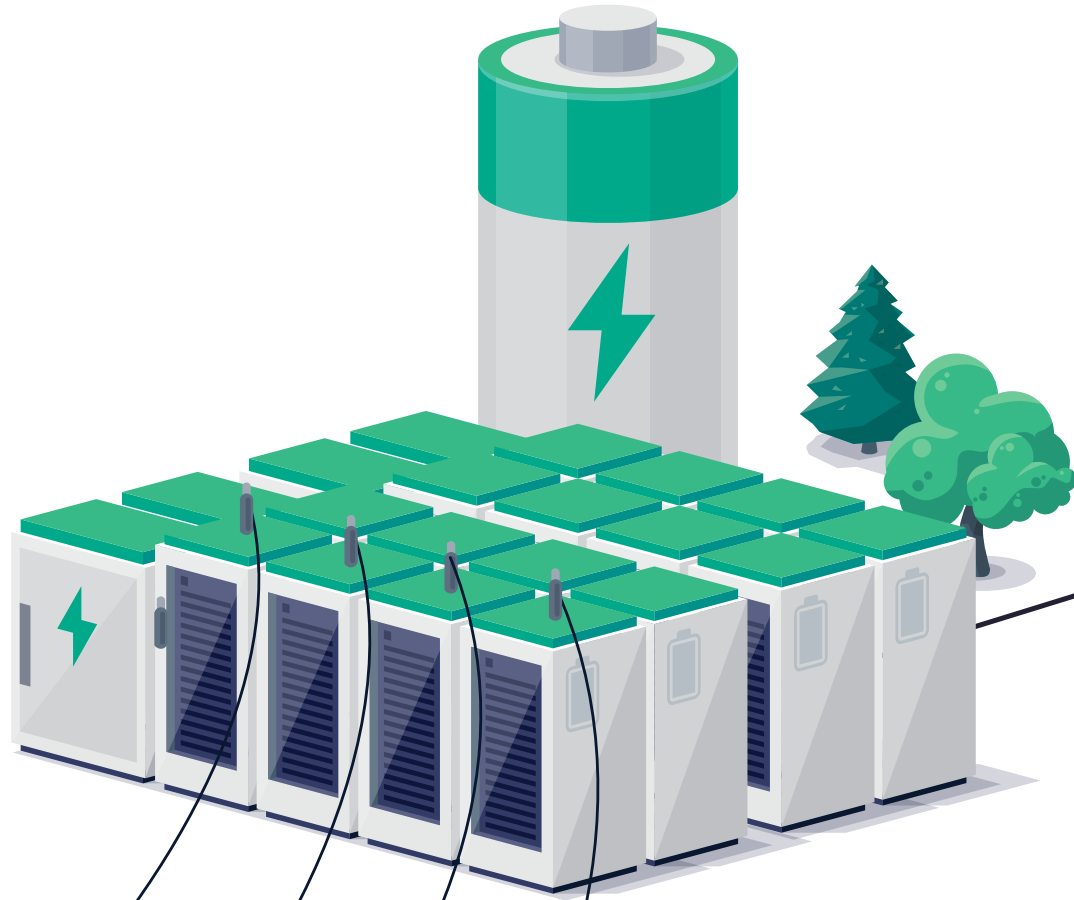
Generation:

Electricity is generated from a number of different sources, including renewable energy such as solar panels.



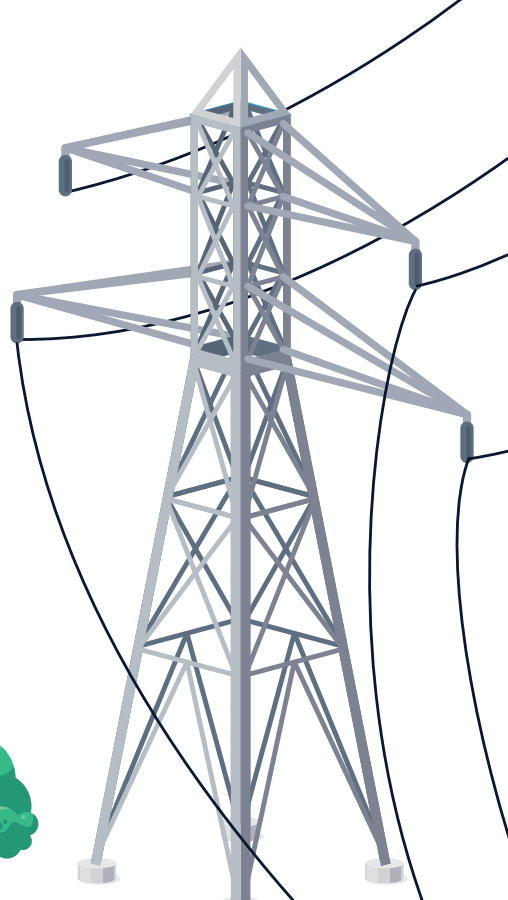
Storage:

Renewable energy can be stored for use at a later time, including peak times when energy usage is higher than normal.



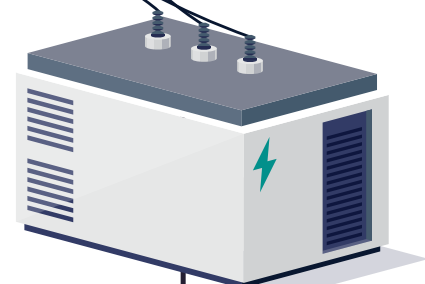
Transmission Line:

High voltage electricity travels from where it is generated or stored along transmission lines.



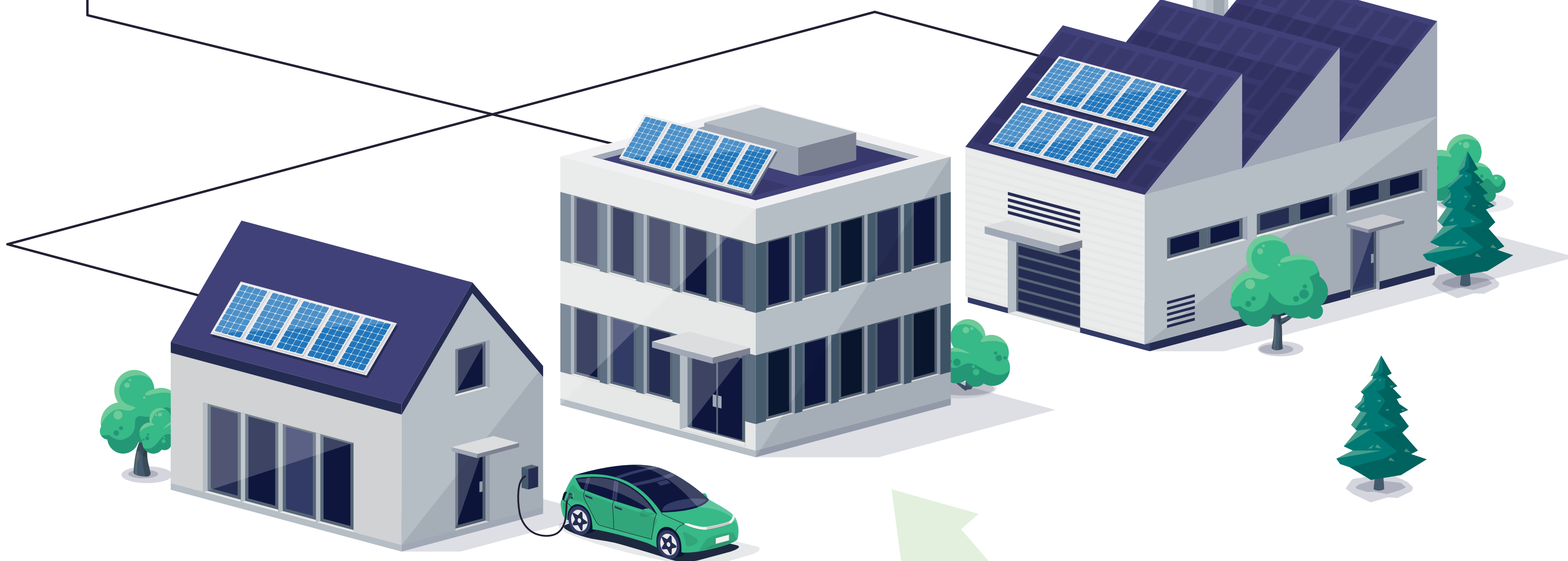
Substations:

High voltage electricity must be lowered at a substation before it can be used in homes and businesses.



Distribution Lines:

Distribution lines, overhead or underground, carry electricity to your home for use.



Homes and Businesses:

Electricity from distribution lines flow to a meter inside your home and then to outlets and various connections that power your home.

